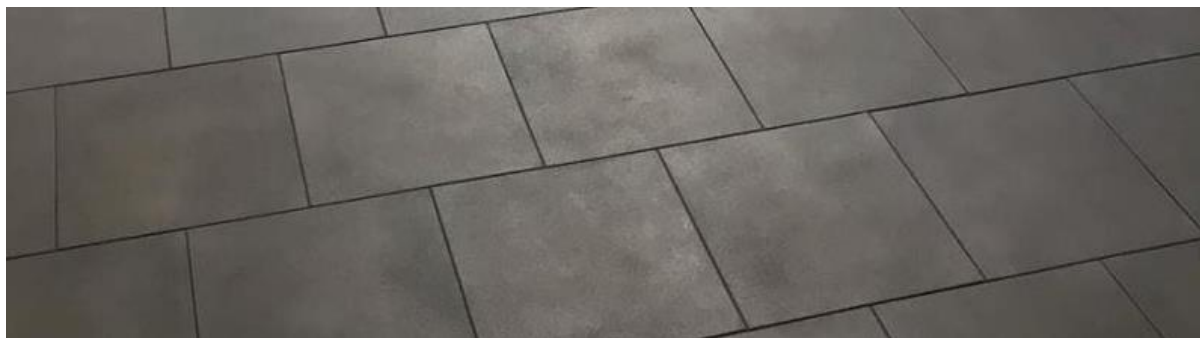
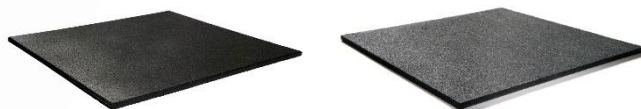


## Technische datasheet Extreme granulaattegels (15/20/30/43mm)



Productfoto's:



Product description:

Rubber floor mat, developed for fitness use. Product contains SBR granulate (made from recycled European car tyres), bonded through warmth with high quality PU-binder. Depending on thickness mats are on both sides flat, or upper side flat with a profiled base.

Article number:

Diverse, depending on product. (product group Fitness mats, 226)

Dimensions:

1000x1000mm. (15, 20, 30, 43 and 65mm. thickness)  
500x500mm. (15mm thickness)

Size tolerance thickness:

+/- 8%

Size tolerance length-width:

+/- 1,5 %

Weight m<sup>2</sup>:

15mm. 13,5kg / 20mm. 17,5kg / 43mm. 26kg

Weight tolerance:

- 5% / +8% (5+3 because of the use of pigments)

Behaviour to fire:

Class E- S2, in accordance with EN13501-1, temperature allowance  
-40°C / +80°C

Thermal conductivity:

0,14 W.m<sup>2</sup>K

Soundproofing:

Tested in accordance with EN10140-3

SVHC REACH:

Pass (concentrations: <0.1%)

Product properties:

Water- and frost resistant / only mats with a profiled base are suitable for indoor and outdoor use / shock- and sound absorbing / anti-slip / 100% recyclable / 2 years warranty (except colour, wear caused by exceptional use and/or extreme load.) Note, white rubber spots can be visible in the mats, this is because of using recycled material in production.



Handelsweg 3  
1751 HE Schagerbrug  
0224571468  
bosrubber.nl

Bel voor meer informatie (+31) 224-571468  
of mail naar [info@bosrubber.nl](mailto:info@bosrubber.nl) voor meer informatie

